

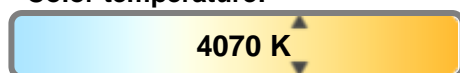
Light efficiency:



Light quality:



Color temperature:

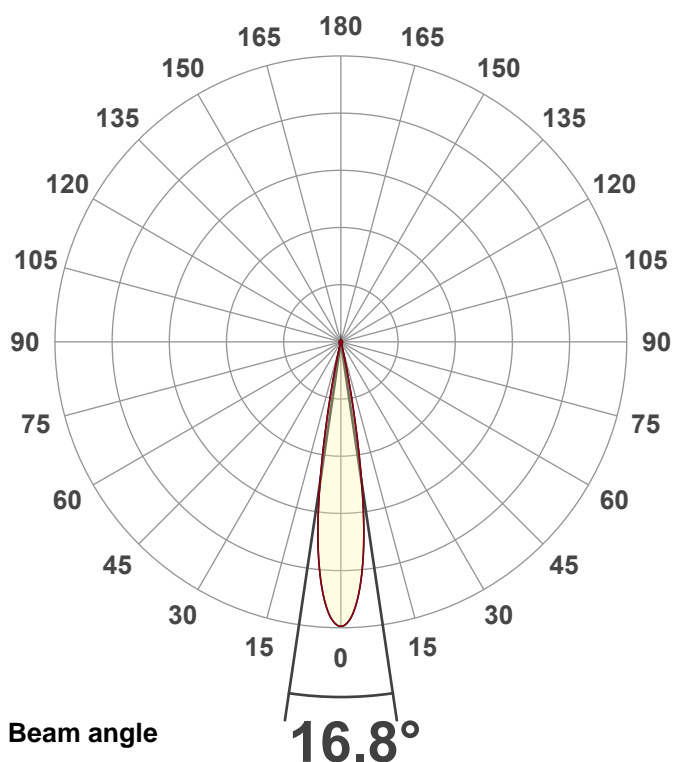


Output: 15964 lm
Peak: 110978 cd
Power: 720 W
PF: 1.0



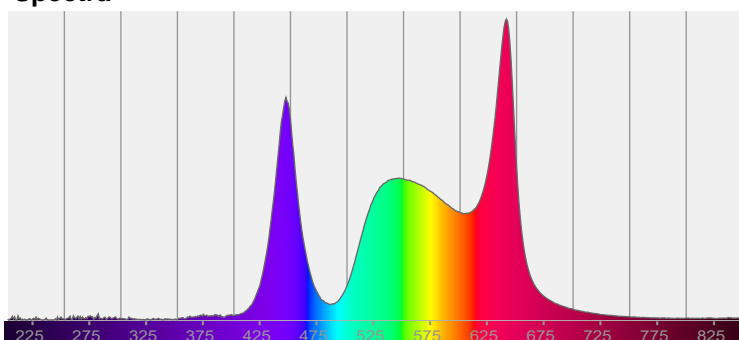
Product name:
Hydro Flex L19 (Zoom 50% CRI)
Item number:

Date and time:
9/8/2025 12:14:38 PM

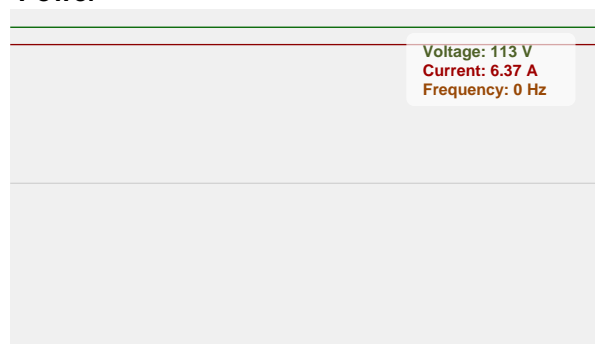


CIE 1931
x: 0.371
y: 0.348

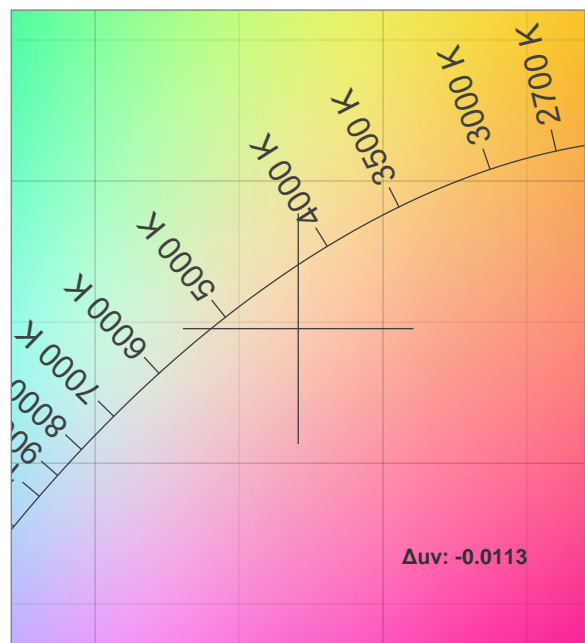
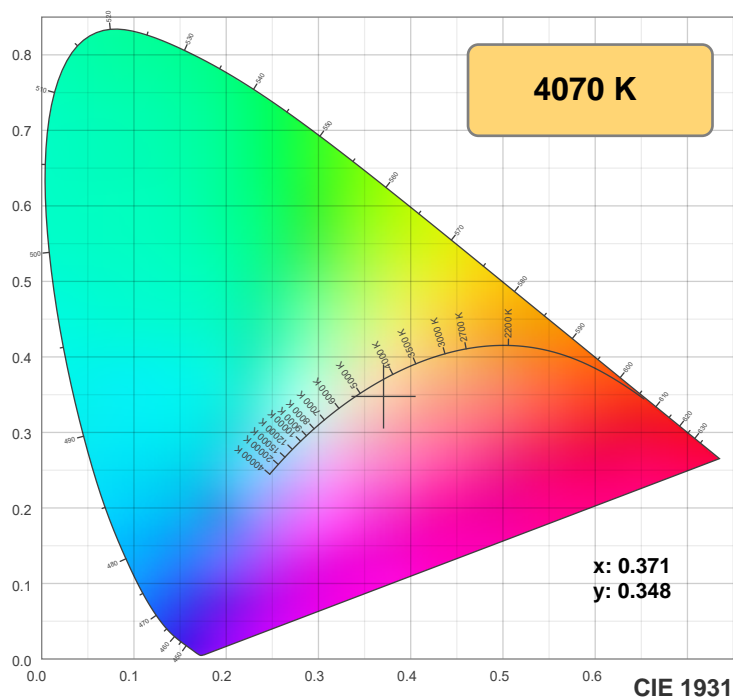
Spectra



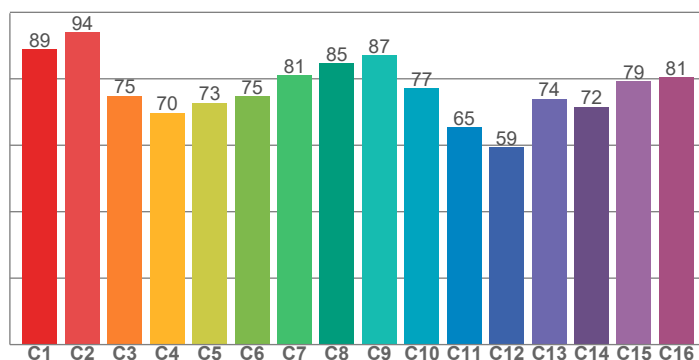
Power



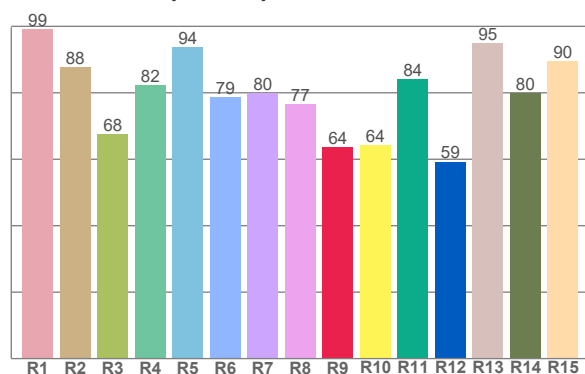
Color details



TM-30: 77.6



CRI: 83.2 (R1-R8)



CRI R values, only R1-R8 are used to calculate final CRI value

R1	R2	R3	R4	R5	R6	R7	R8	R9	R10	R11	R12	R13	R14	R15
99.1	87.7	67.6	82.2	93.8	78.7	79.9	76.7	63.7	64.1	84.2	59.2	94.9	79.8	89.6

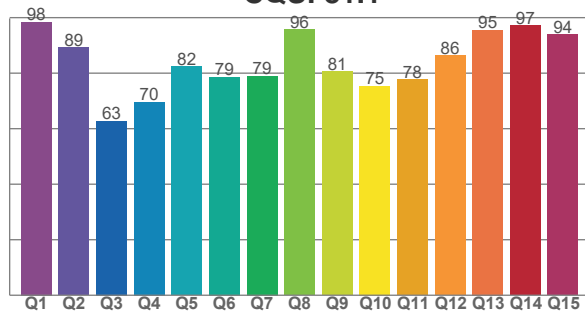
TM30 C values, 16 binned values out of total of 99 C values

C1	C2	C3	C4	C5	C6	C7	C8	C9	C10	C11	C12	C13	C14	C15	C16
88.9	94.0	74.9	69.7	72.8	74.8	81.0	84.7	87.1	77.2	65.4	59.3	74.0	71.6	79.3	80.5

CQS Q values

Q1	Q2	Q3	Q4	Q5	Q6	Q7	Q8	Q9	Q10	Q11	Q12	Q13	Q14	Q15
98.5	89.3	62.8	69.6	82.5	78.6	79.0	95.7	80.7	75.4	77.8	86.3	95.5	97.1	93.9

CQS: 81.1



Color parameters

Color temperature	Color rendering index	Red component	Color fidelity	Color gamut	Color quality scale	Color coordinate cie 1931	Color coordinate cie 1931	Color coordinate	Color coordinate	Color deviation from black body
CCT	CRI	CRI R9	TM30 Rf	TM30 Rg	CQS	x	y	u	v	Δuv
4070 K	83.2	63.7	77.6	111.0	81.1	0.371	0.348	0.230	0.324	-0.0113

TM-30 details

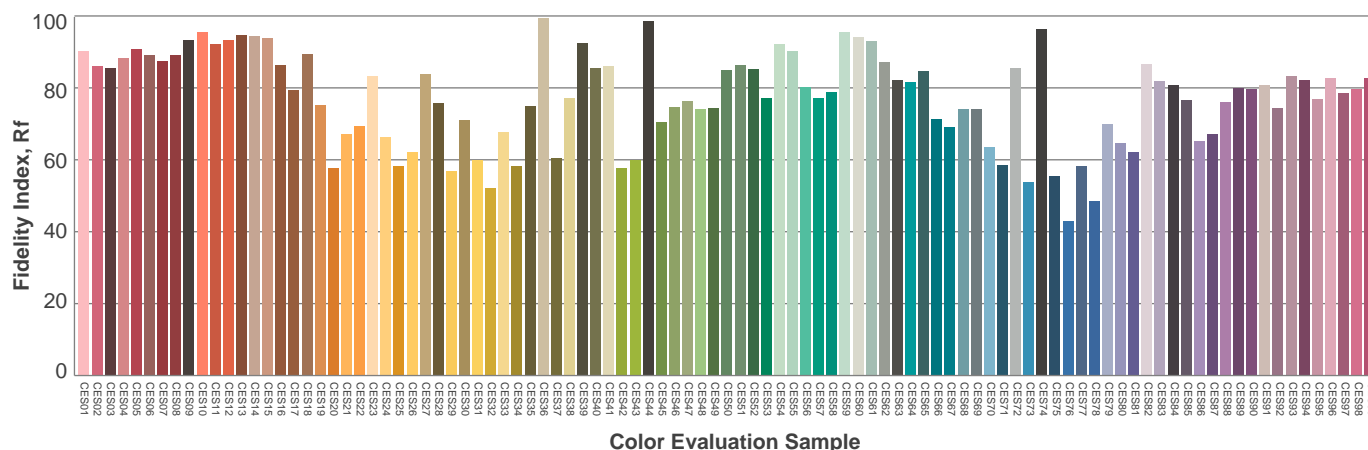
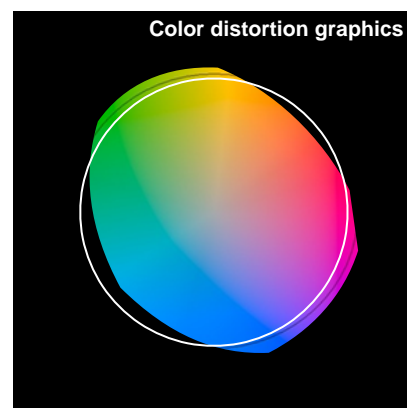
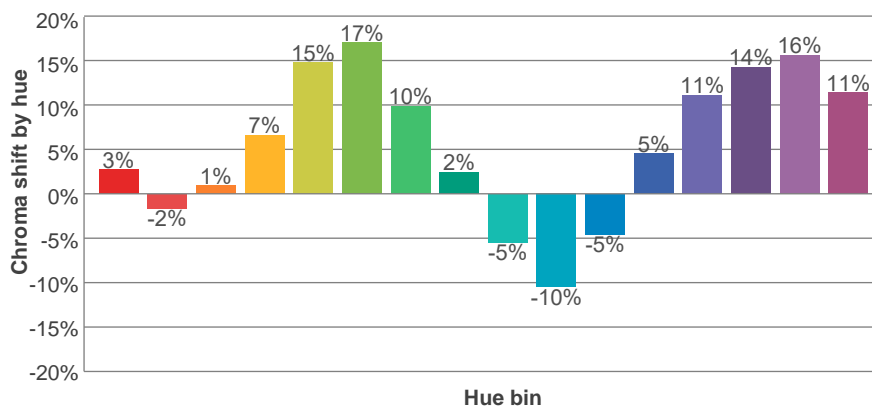
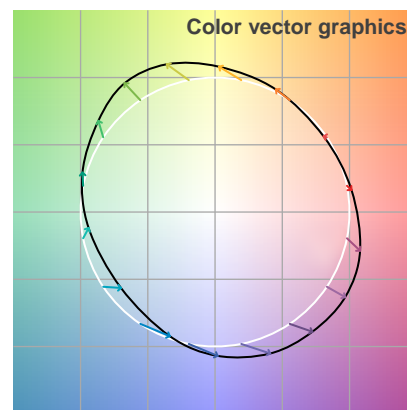
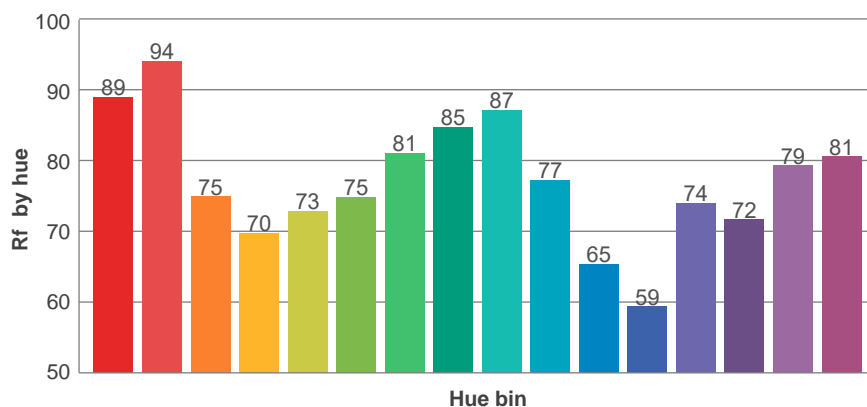
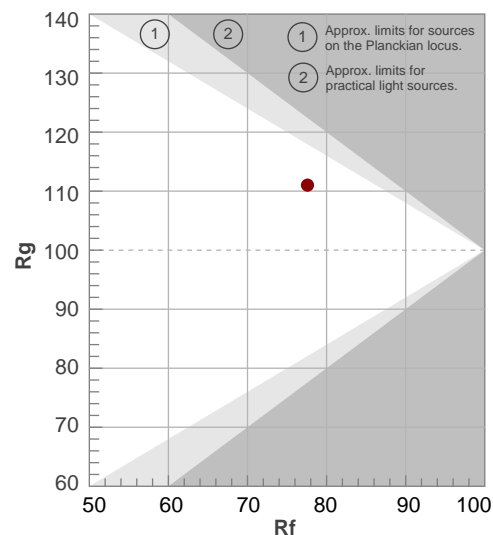
Rf 77.6

Fidelity index Rf

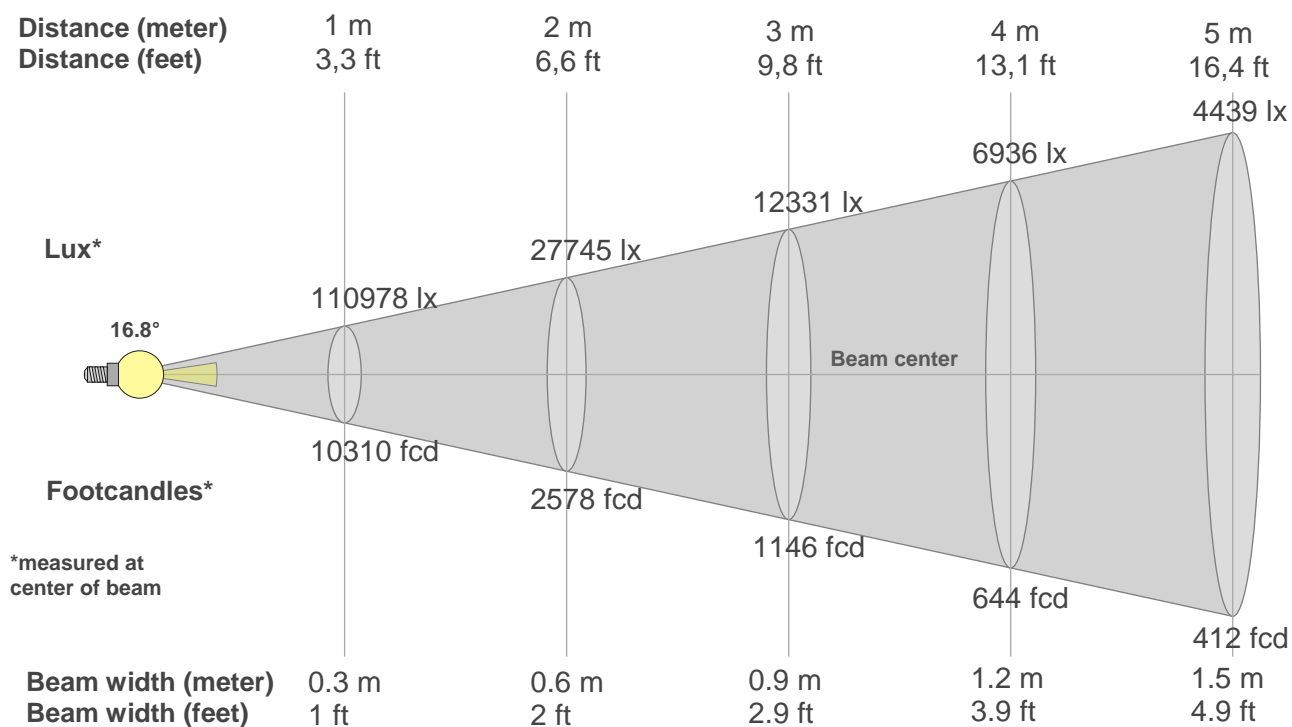
Rg 111.0

Gamut index Rg

Hue Bin	R _f	Shifts (%)	
		Chroma	Hue
1	89	3%	-4%
2	94	-2%	2%
3	75	1%	13%
4	70	7%	18%
5	73	15%	14%
6	75	17%	3%
7	81	10%	-8%
8	85	2%	-10%
9	87	-5%	-7%
10	77	-10%	8%
11	65	-5%	23%
12	59	5%	23%
13	74	11%	20%
14	72	14%	11%
15	79	16%	1%
16	81	11%	-7%



Beam details



Beam intensities from 1-20m

1m	2m	3m	4m	5m	6m	7m	8m	9m	10m	11m	12m	13m	14m	15m	16m	17m	18m	19m	20m
3.3ft	6.6ft	9.8ft	13.1ft	16.4ft	19.7ft	23ft	26.2ft	29.5ft	32.8ft	36.1ft	39.4ft	42.7ft	45.9ft	49.2ft	52.5ft	55.8ft	59.1ft	62.3ft	65.6ft
110978lx	27745lx	12331lx	6936lx	4439lx	3083lx	2265lx	1734lx	1370lx	1110lx	917lx	771lx	657lx	566lx	493lx	434lx	384lx	343lx	307lx	277lx
10310.2 fcd	2577.6 fcd	1145.6 fcd	644.4 fcd	412.4 fcd	286.4 fcd	210.4 fcd	161.1 fcd	127.3 fcd	103.1 fcd	85.2 fcd	71.6 fcd	61 fcd	52.6 fcd	45.8 fcd	40.3 fcd	35.7 fcd	31.8 fcd	28.6 fcd	25.8 fcd

Intensities in 0° c-plane

0°	1°	2°	3°	4°	5°	6°	7°	8°	9°	10°	11°	12°	13°	14°	15°	16°	17°	18°	19°
111k	110k	108k	104k	99k	92k	84k	73k	61k	47k	33k	21k	12k	6k	2k	1k	1k	1k	1k	1k
100%	99%	97%	94%	89%	83%	75%	66%	55%	43%	30%	19%	11%	5%	2%	1%	1%	1%	1%	1%

Intensities in 90° c-plane

0°	1°	2°	3°	4°	5°	6°	7°	8°	9°	10°	11°	12°	13°	14°	15°	16°	17°	18°	19°
111k	110k	108k	104k	99k	92k	84k	73k	61k	47k	33k	21k	12k	6k	2k	1k	1k	1k	1k	1k
100%	99%	97%	94%	89%	83%	75%	66%	55%	43%	30%	19%	11%	5%	2%	1%	1%	1%	1%	1%

Intensities in 180° c-plane

0°	1°	2°	3°	4°	5°	6°	7°	8°	9°	10°	11°	12°	13°	14°	15°	16°	17°	18°	19°
111k	110k	108k	104k	99k	92k	84k	73k	61k	47k	33k	21k	12k	6k	2k	1k	1k	1k	1k	1k
100%	99%	97%	94%	89%	83%	75%	66%	55%	43%	30%	19%	11%	5%	2%	1%	1%	1%	1%	1%

Intensities in 270° c-plane

0°	1°	2°	3°	4°	5°	6°	7°	8°	9°	10°	11°	12°	13°	14°	15°	16°	17°	18°	19°
111k	110k	108k	104k	99k	92k	84k	73k	61k	47k	33k	21k	12k	6k	2k	1k	1k	1k	1k	1k
100%	99%	97%	94%	89%	83%	75%	66%	55%	43%	30%	19%	11%	5%	2%	1%	1%	1%	1%	1%

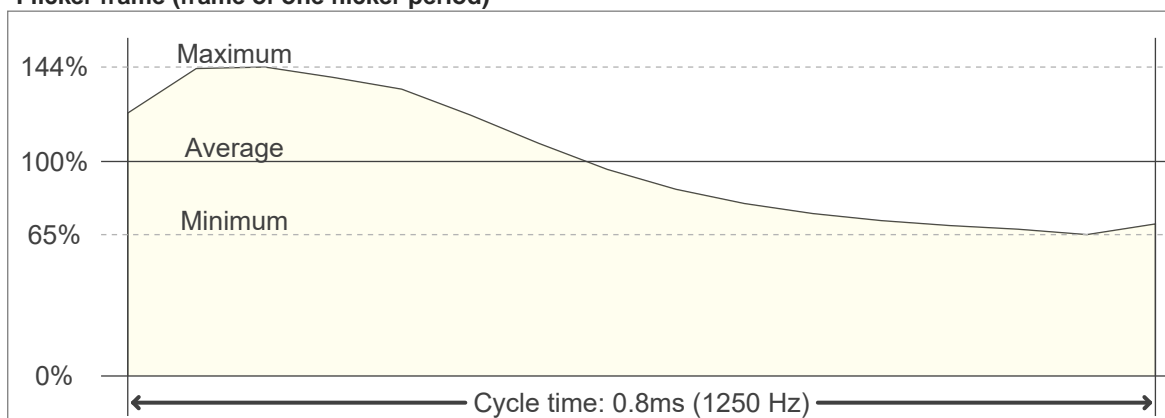
Beam angle 50%	Field angle 10%	Cutoff angle 2,5%	Intensity ratio in 120° cone	Intensity ratio in 90° cone
16.8°	24.2°	27.7°	63.4%	58.0%

Flicker

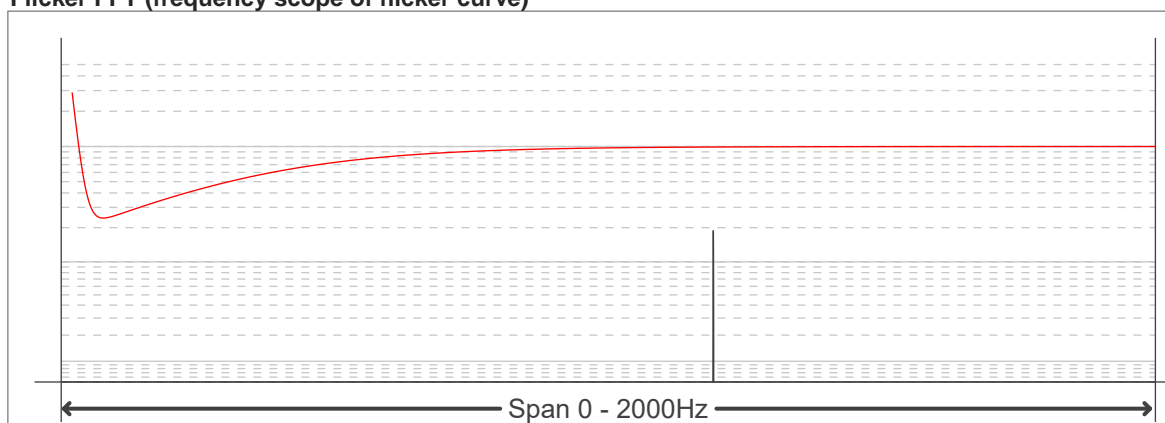
Flicker curve (complete sampled flicker signal)



Flicker frame (frame of one flicker period)



Flicker FFT (frequency scope of flicker curve)



Flicker results:

Flicker frequency:		1250 Hz	
Flicker index:	0.13	JA8/10 40Hz	0.17 %
Flicker percentage:	38.55 %	JA8/10 90Hz	0.39 %
SVM: (Visual flicker)	0.38	JA8/10 200Hz	0.84 %
PstLM	0	JA8/10 400Hz	1.73 %
Mp	0.05	JA8/10 1000Hz	6.77 %

Flicker conditions:

Sample rate:	20000 samples/second
--------------	----------------------